



Forest Extendable Table

design Beatriz Sempere, 2017

Extendable table with lacquered steel base. Glass or crystalceramic top.

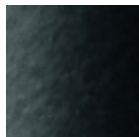


Colors and Materials

Structure



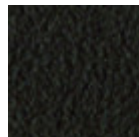
Acciaio Bianco



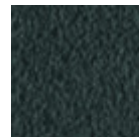
Acciaio Nero



Sand Steel

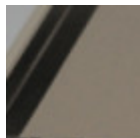


Brown Steel

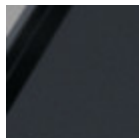


Grafite Steel

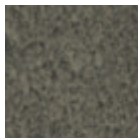
Coating



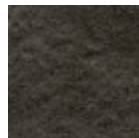
Matt Sand
Antiscratch Glass



Matt Graphite
Antiscratch Glass



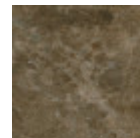
Lead Crystalceramic



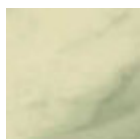
Charcoal Savoia
Crystalceramic



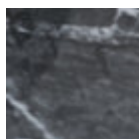
Cement Savoia
Crystalceramic



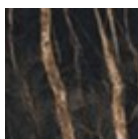
Emperador Marble
Crystalceramic



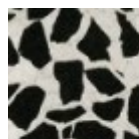
Crystalceramic with
effect calacatta
marble



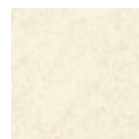
Crystalceramic
Glossy Black Greek
Marble



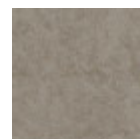
Crystalceramic with
effect noir desir
marble



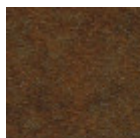
Venetian
crystalceramic



Oxide White
Crystalceramic

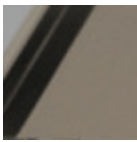


Oxide Sand
Crystalceramic

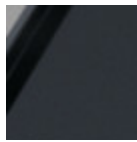


Corten
Crystalceramic

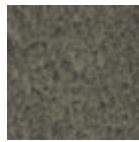
Extensions



**Matt Sand
Antiscratch Glass**



**Matt Graphite
Antiscratch Glass**



Lead Crystalceramic



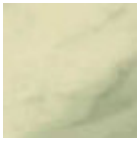
**Charcoal Savoia
Crystalceramic**



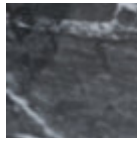
**Cement Savoia
Crystalceramic**



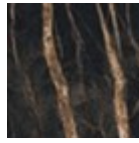
**Emperador Marble
Crystalceramic**



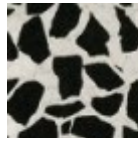
**Crystalceramic with
effect calacatta
marble**



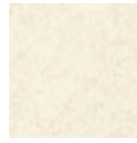
**Crystalceramic
Glossy Black Greek
Marble**



**Crystalceramic with
effect noir desir
marble**



**Venetian
crystalceramic**



**Oxide White
Crystalceramic**



**Oxide Sand
Crystalceramic**



**Corten
Crystalceramic**

Dimensions

Dimensions

Volumetric Details

Weight 200 Kg

Volume 1.63 mc

Package 4

Image not found or type unknown

| | cm | inch |
|----------|-----|-------|
| A | 75 | 29.5 |
| B | 200 | 78.7 |
| C | 100 | 39.4 |
| D | 300 | 118.1 |